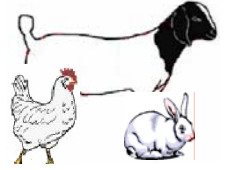


# Ward County 4-H Project Record Form Livestock Projects



Project: \_\_\_\_\_

Year: \_\_\_\_\_

Name: \_\_\_\_\_

Address: \_\_\_\_\_

Phone: \_\_\_\_\_



Current 4-H Age: \_\_\_\_\_

Birthday: \_\_\_\_\_

Years in 4-H: \_\_\_\_\_

Years in Project: \_\_\_\_\_

Name of 4-H Club: \_\_\_\_\_

What do you want to learn and do in the project this year?

Project Goals	Date Accomplished

This achievement plan began:

\_\_\_\_\_ Date

\_\_\_\_\_ 4-H Member

\_\_\_\_\_ Date

\_\_\_\_\_ Parent/Guardian

\_\_\_\_\_ Date

\_\_\_\_\_ 4-H Leader



Educational programs of Texas AgriLife Extension Service are open to all people without regard to race, color, sex, disability, religion, age, or national origin. A&M University System, U.S. Department of Agriculture, and the County Commissioners Courts of Texas Cooperating

Individuals with disabilities who require auxiliary aid, or accommodation in order to participate in Extension Programs are encouraged to contact the Extension Office of Ward County at (432)943-2682 or 943-4112 for assistance.

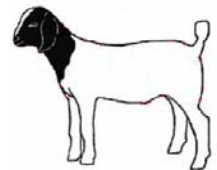
## Financial Records

It is important to keep track of the money you spend (expenses) and the money you make (income). These records will be important when you plan your livestock projects from year to year. It will also let you (and your parents) know how much your livestock project costs or makes. Record your income and expenses in this chart. These will include: feed, veterinarian bills, vaccinations, entry fees, costs to travel to shows, etc. Add pages as needed

Date	Description	Income (+)	Expense (-)	Balance
<b>Total project income and expense:</b>				

## Health Records

It is important to keep health records for future reference. Include things like shots, dewormers, vitamins, veterinary visits etc.



Animal	Reasons/Symptoms	Treatment	Size of dose	Comments

## Growth Rate

It's important to weigh your animal and monitor how much weight it is gaining. You should weigh your animal once a week at the same day and time, every time. These records will help you to calculate how much your animal gains per day.

**Example:** *Your goat weighs 100 pounds on Saturday and 107 pounds the next Saturday. In one week he gained 7 pounds (107-100). Divide 7 pounds by 7 days.  $7/7=1$  pound per day!*

Date	Weight	Gain

Date	Weight	Gain

Date	Weight	Gain



## Cost of Feed Per Day

Using records of feed purchases (and knowing how much you feed or how fast you go through a bag of feed) you can calculate the cost of feed per day.

**Example:** *The cost of a 50 pound sack of feed is \$7.50. So, \$7.50 divided by 50 pounds = \$0.15 per pound. You then take the amount you feed your animal and multiply this by \$0.15 and this will give you the cost of feed per day.*

*For example; 2.5 pounds per day x \$0.15 = \$0.38 per day.*

Enter your numbers in the calculations below and calculate the cost of feed per day for your livestock project.

$$\frac{\text{_____ (Cost of feed)}}{50 \text{ lbs}} = \text{_____ per pound}$$

$$\text{_____ (Amount fed daily)} \times \text{_____ (Price per pound)} = \text{Cost of feed per day}$$

$$\text{_____} = \text{My cost of feed per day!}$$

## Summary of Activities and Accomplishments!

List specific things you learned from your project: \_\_\_\_\_

---

---

Activities and Experience: demonstrations, exhibits, clinics, shows, workshops, etc. Include awards! \_\_\_\_\_

---

---

Leadership: List what you did to help others in this project: \_\_\_\_\_

---

---

What was the most exciting thing you did and learned from your project? \_\_\_\_\_

---

---

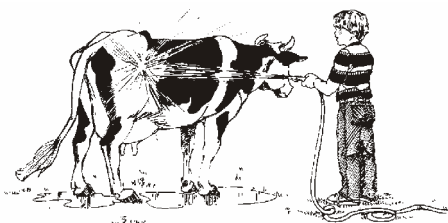
What are your future plans with this project? \_\_\_\_\_

---

---

## What's the Bottom Line!

\$ Earned	\$ Spent	# Hours	Project Outcome



***Great Job! Give yourself a pat on the back!***